

9261016

miBUS 16IN/2OUT Call Point

Description

The miBUS 16IN/2OUT Call Point acts as a bridge to connect up to 16 dry contact inputs to a miALERT Nurse Call System over the miBUS wired protocol. Each dry contact device provisions to the miALERT Nurse Call System as a unique call point device.

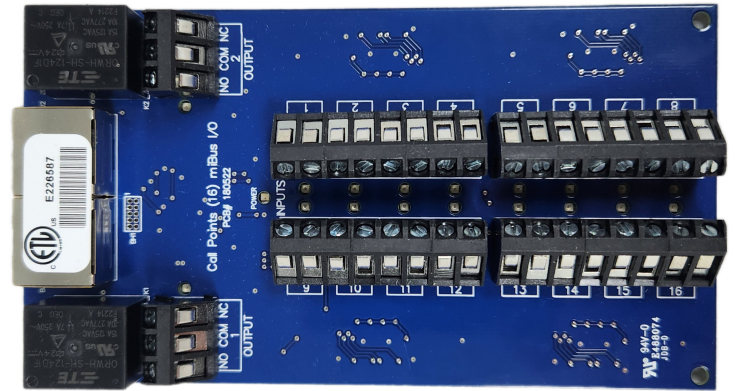
In addition, up to 2 dry contact operated devices can be controlled from the miBUS 16IN/2OUT Call Point.

Input and output devices can be normally open or normally closed.

The miBUS protocol provides power and data over a single line, minimizing cable runs. Up to 32 devices can be daisy-chained to a single miBUS controller.

Features

- Can integrate up to 16 dry contact devices to the miALERT Nurse Call System.
- Can remotely control 2 dry contact devices.
- miBUS protocol carries data and power over a single line.
- Up to 32 units can be daisy-chained to a single controller.



Specifications

Unit: 138mm x 74mm x 17mm

Power: 24VDC (0.050A) supplied by the proprietary miBUS connection.

Certified Cable: UltraGIG / UG-C6FT6-colour E539766 / UG-C6FT4-colour E539766

INTERTEK RECOGNIZED COMPONENT

Hospital Signaling and Nurse Call Equipment [UL 1069:2007 Ed.7+R:12Aug2016]; Standard(s) Signal Equipment [CSA C22.2#205:2012 Ed.2 +E2015]

NOTE: For input devices, all devices mounted to a single 16IN/2OUT Call Point must have the same connection type; normally open or normally closed.

Package Contents

- miBUS 16IN/2OUT Call Point
- Four (4) #6 mounting screws
- Four (4) backboard standoffs